

Breckon Hill Primary School



School Prospectus





Contents:

Headteacher's welcome

- Admissions
- The curriculum
- Homework
- Meet the team
- School uniform
- Parental involvement
- School meals
- Wellbeing
- Behaviour and attendance
- Extra-curricular activities
- Special educational needs and disabilities (SEND)
- School trips and visits
- Community links
- School policies
- School closures
- The governing board
- The cost of the school day
- Helpful questions and answers for parents and carers



Headteacher's welcome

Dear Parents,

A very warm welcome to Breckon Hill Primary School.

We are passionate about delivering an education to our pupils that is well rounded, informative, challenging, stimulating and, most of all, fun. We want our pupils to leave school ready for their future – whilst being able to look back with fond memories. Every child should be encouraged to reach their full potential and ready themselves for adulthood. This school enables pupils to explore education and become creative thinkers and well-rounded learners. We do this by offering a wide range of learning skills with an exciting curriculum to match.

We are all proud of what we achieve here at Breckon Hill Primary School. We hope that you will enjoy taking the time to look through this prospectus and learn how we are going to ensure that your child gets the most out of their education. We are all about making the most of every day.

Kind regards,

Mrs J Smith

Breckon Hill Primary School

Making the Most of Every Day

We expect everyone to work hard and be kind.

Our aims are for:

Everyone to have a positive attitude to school life and learning.

Everyone to celebrate our similarities and differences.

Everyone to feel safe and welcome.

Everyone to be proud of belonging to the Breckon Hill school family, our community and our town.



Admissions

Our school welcomes pupils from the beginning of September, following their fourth birthday. Our Admissions Policy is implemented in line with the 'School Admissions Code' to ensure fairness and transparency with regards to admissions. We also address, within the policy, issues of over-subscription criteria, admission appeals and pupil registration. You can request a copy of our Admissions Policy from our school office or it is available on our school website, Breckonhillprimary.co.uk.

The curriculum

For pupils to be successful in education, we have designed our lessons to:

- Be broad and balanced.
- Promote the spiritual, moral, cultural, intellectual and physical development of children.
- Prepare children for the opportunities, responsibilities and experiences of adult life.



We strongly encourage pupils to explore the curriculum and engage with learning at every opportunity – as such, we offer varying learning techniques that appeal to all types of learners.

We aim to develop pupils' self-esteem, confidence, skills and knowledge throughout the curriculum. We respect diversity and will provide equal opportunities to all pupils, ensuring that positive relationships are encouraged, and any bullying or disrespectful behaviour is disciplined in accordance with our Behaviour Policy. We appreciate that you will want to be involved as much as possible with what your children are learning, so, as well as the brief description of the subjects below, parents will be sent a summary of their child's syllabus for each subject at the start of the new term.

Homework

To consolidate pupils' knowledge, the school will set age appropriate homework. Our teachers work hard to help your children achieve to their best of their ability, and setting and receiving homework is a part to that process, any help you can give to help your children to learn at home would be most appreciated.



Meeting the team

Sending your child to a new school can be daunting, so we would like you to be familiar with who will be looking after your children throughout the day. We are really proud of the team we have here – they have plenty of experience and, between them, they create an education environment for pupils that is stimulating, challenging and fun.

Our school website gives further details of the staff and their roles and class responsibilities.

Breckonhillprimary.co.uk

Settling in

Should you have any worries, please do not hesitate to make contact with your child's class teacher. We have lots of staff happy to help:

- **Mrs Camp:** Deputy Headteacher
- **Mrs Chapman:** Assistant Headteacher, Inclusion and Special Educational Needs Co-ordinator
- **Mrs Holian:** Early Years Foundation Stage Leader
- **Mrs Price:** Admissions and Attendance
- **Mrs Cartwright/Ms Higgins:** Educational Welfare Officer
- **Miss Stubbs:** School Administrator
- **Mrs Butler:** School Finance Officer, school meals.

School Uniform

The Governing Body of Breckon Hill Primary School has a uniform policy which is detailed below. All our children come to school in a uniform that was agreed in consultation with parents.

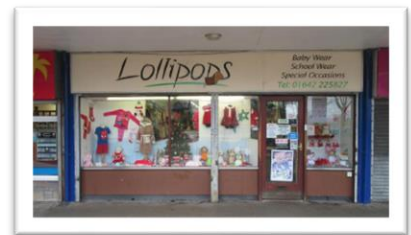
You can find Lollipops at:

Lollipops 20 Norfolk Place, Berwick Hills, Middlesbrough, TS3 7PA

[01642 225827](tel:01642225827)

There are also many shops that stock school uniform such as: ASDA, Tesco and Sainsbury's.

School uniform is required to be worn by all children who attend school. Children should wear:



White polo shirt Blue Sweatshirt or Cardigan



Black trousers/skirt/dress/shorts/checked dress (summer)



Black shoes with black tights or black socks



Sorry No Earrings

For health and safety reasons we ask that children do not wear earrings to school. We can provide water bottle for school or bring one from home. Many thanks for your support.



PE

For PE your child must change into a different set of clothes for hygiene and safety reasons.

Your child will need to wear:

T-shirt



Shorts/Jogging bottoms/leggings



Trainers/Plimsolls - Pull-on P.E. shoes are best for small children.



PE kits can be provided by school, please let your child's class teacher know.

Parental involvement

We appreciate that parents play a vital role in ensuring the success of our pupils and we want to provide every opportunity for you to get involved. We encourage you to take interest in your child's learning as much as possible by:

- Reading with your child
- Helping your child with their homework

If you would like to be involved in any of the above, you can contact our headteacher, using the contact information in the useful contacts section.

We understand that people lead busy lives but still want you to have a say and stay informed – we will send information to you via the following methods:

- Parent texts and emails, newsletters, e-newsletters, letters home, school website

These methods will be on top of your child's annual progress report, parents' evenings and any pre-arranged meetings organised throughout the academic year.

School meals

At our school, pupils have the choice between having meals cooked and served in school or bringing in a packed lunch from home. We will, of course, cater for pupils eligible for free school meals – to be eligible for free school meals, you must be in receipt of at least one of the following:


- Universal Credit - your household income must be less than £7,400 a year (after tax, and not including any benefits you get)
- Income Support
- Income Based Jobseekers Allowance
- Income Related Employment and Support Allowance
- the guaranteed element of Pension Credit
- support under part V1 of the Immigration and Asylum Act 1999
- Child Tax Credit - as long as you're not also entitled to Working Tax Credit, and you have an annual gross income of no more than £16,190
- a 'run-on' of Working Tax Credit (paid for 4 weeks after you stop qualifying for Working Tax Credit)

If you're currently getting Working Tax Credit, or your partner is getting Working Tax Credit, regardless of your income, you will not qualify for free school meals."

If you have any additional queries regarding your eligibility for free school meals, you can contact school on 01642 243044.





If you would prefer your child to have a packed lunch from home, please inform the school. There is information available about what may be included to provide a healthy packed lunch. **Please note we are a nut free school due to several children having a nut allergy.**




Breckon Hill Primary School

Packed lunch guidelines.

Please bring a selection of:



Please **do not** bring:



Wellbeing

We want every pupil in our school to be healthy and happy – we do know, however, that they may not always be, and when this is the case, we will do everything in our power to help that pupil. We have several provisions in place that promote the welfare of each pupil within the school. We work with an organisation called CATS who support us with a play therapist 4 days a week. This work enables children experiencing challenges to manage their feelings and maintain positive mental health.



Behaviour and attendance

We hold very high standards of behaviour as we believe that good behaviour has a direct impact on pupils' learning. We understand that behaviour issues may arise, and where this is the case, we will deal with each instance in accordance with our Behavioural Policy and ensure each pupil is treated fairly and equally.

We, of course, want to celebrate all good behaviour, and we have a rewards scheme in place for those pupils who go above and beyond to exhibit good behaviour and an outstanding commitment to their work and school life.

Mrs Cartwright our Education Welfare Officer is on hand to support families in maintaining their child's good school attendance.

All children are expected to have at least 96% attendance at school. Our Education Welfare Officer monitors attendance and supports families with making sure children come to school so they are best placed to make the most of their education.



The School Day

8.00am Breakfast club is open to all children Reception-Y6, free of charge. Places are limited and must be booked via the school office.

8.30am Gate opens and children come into school

8.40am The register is taken. Any children arriving after this time are marked as late.

Children take half an hour for lunch.

All classes have a 15 minute break in the afternoon.

3.00pm School finishes

3pm- 5.30pm Tea Club, please book a place and contact the office for more details about charges.

Collecting your children

Reception and Year 1 Classes may be collected from the classroom via the Reception or Y1 gates.

In the interests of safety it is important that parents wait for their children in the playground/outside of classrooms. The children will be brought out to you.

The **Pre-school and Nursery** morning runs from 8.30am to 11.30am The **Pre-school and Nursery** afternoon runs from 12.00pm to 3.00pm

White polo shirt



Light Blue Sweatshirt or Cardigan



Black Jogging bottoms/Leggings/Skirt



Sensible shoes. No sandals/flip flops/slippers



The nursery and pre-school uniform is a pale blue jumper or cardigan.

Extra-curricular activities

We believe that a safe, social atmosphere helps pupils of all ages to develop their social skills and confidence. That is why we host a number of different extra-curricular activities for pupils that occur before, after and during the school day.

Special educational needs and disabilities (SEND)

At our school, we welcome all pupils and we pride ourselves on creating an inclusive atmosphere. We have provisions in place to ensure our pupils with SEND don't miss out on any opportunity. Mrs Chapman our SEND Co and Assistant Headteacher will support families with a child who may have a special need or disability. Our website details our support for SEND children further.

School trips and visits

Each year, the school arranges numerous school trips and visits for our pupils – they are designed to enhance your child's learning experience as well as teach them essential skills for their adult life. We make visits free of charge.

Community links

Part of our school ethos is to involve ourselves in the community as much as we can. We see it as vital to teach pupils about the value of a community and the benefits that being community spirited can bring. As a result, we partake in several community projects throughout the year. These projects welcome members of the community to the school, as well as teach pupils key life skills. Recently we have worked with builders Kirkland and Bowmer to create safety signs, we have worked with MIMA where our work celebrating the local area was displayed in their gallery.

School policies

Part of our statutory responsibility as a school is to implement policies to ensure we run our school to the highest standards. We want to ensure that you feel happy sending your child to school every day. As a school, we are dedicated to creating a comfortable, challenging and fun learning environment for your children and our policies are one of many ways we ensure this. All of these policies can be found on the school website: breckonhillprimary.co.uk.

School closures

To continue to keep our pupils safe, we have procedures in place to account for unexpected school closure, e.g. due to adverse weather. Unfortunately, we can't always predict events that may lead to school closures – communicating our plans with you is our priority. To be able to get key information across to you quickly in the event of an unexpected closure, we will carry out the following procedure:

We will text information to parents so please ensure we have up to date contact details.

We will place information on our school website.

The Governing Body

The role of the governing board is to ensure that our school provides an effective education for our children and meets all the statutory requirements. We are part of The Legacy learning Trust, please follow this link to find out more about the trust: <https://thelegacylearningtrust.org.uk/>.

This is a huge task, and our governors are committed and hard working. Our governing board is made up of representatives from the council, the local community, parents and staff. The governing board meets every term and discusses issues relating to the management of the school, such as the curriculum, progress of the school development plan, budget, premises, safeguarding and health and safety.

If you are interested in becoming a governor, vacancies are advertised on the school newsletter.

The information contained in this document is correct at the time of printing. For the most up to date information, please go to our school website.

Breckon Hill Primary School's actions to address the cost of the school day

Increasingly schools are asked to look at how they can make sure the school day does not put financial pressure on families. We currently have the following measures in place to help families with school costs and make sure that our children can participate and learn.



- We have provided digital tools for a number of our families to enable children to engage with homework.
- Uniform: We ensure that we ask children to wear low cost/durable uniform at a good price for our families. We have a selection of 'nearly new' uniform items which are made available to families from the community centre. We are often given donations of uniform and should any family need additional uniform, please let Mrs Price know and she will be able to organise.
- Pre-school: Children are welcomed into pre-school with a school jumper, free of charge.
- Resources: We stock each classroom with a full range of stationary items, there is no need for

children to bring items from home.

- Trips: School trips and residential excursions are fully funded.
- Breakfast Club: We provide a free breakfast club each morning, which is attended by up to 60 children on any one day.
- After school clubs: As part of our wider curriculum are free to children.
- Nationwide event days: We never ask the children to bring money for events, our aim is to raise awareness and join in. We sometimes ask children to bring an item for the foodbank at harvest time. We don't ask families to send children in dressing up costumes for world book day or wear red noses, instead we organise fun things in school to celebrate the day such as competitions and activities.

Helpful questions and answers for parents and carers

What time do I drop off and pick up my child?

The school gates open at 8.30am and close at 8.40am. Your child needs to enter via the appropriate gates i.e.:

Reception via the Early Years gates

Year 1 via the year 1 gate located off the main school car park

Year 2,3,4,5 and 6 enter via the main school playground

Pick up time is at 3pm.

Where do I go if my child is late and the gates are closed?

If you are late, you must bring your child to the school's main office and a member of staff will take them to their class for you. However, please bring your child on time because it may unsettle your child if they are using different entrances to school.

Where can I park my car when dropping my child off?

Please do not park on Breckon Hill Road, use the side streets to park on if you are travelling by car. There are lots of children, parents and carers who use the road to walk to school and we need to keep the roads safe for them. Often parents park on Saltwell's Road and then walk from there.

What will my child be eating for lunch?

School offer a choice of a hot or cold meal for children. You can find the weekly menu on our school website. www.breckonhillprimary.co.uk it is helpful to look at the menu with your child so they have an idea of what they are going to eat in school. If your child would prefer to have a packed lunch from home, please send this with your child on a morning.

Do I have to pay for school lunch?

All children in Reception, Y1 and Y2 receive free school meals. Once your child reaches Y3 age you will have to pay for school meals or apply for free school meals. Meals are paid for using the ParentPay app.

What do I do if my child is unwell and is not coming to school?

Please phone the school office on 01642 243044 to report your child's absence. If your child visits a doctor or is prescribed medication, please bring the appointment card or medication into school for us to take a copy as proof of illness.

Can I bring birthday treats such as cakes?

Sorry, but we are unable to accept birthday cakes from home due to health and safety reasons.

We look forward to welcoming your family to our school.